

# Sannatitut Keyboard

## Inuktitut Unicode Keyboard

### Windows 2000/XP

Sannatitut is a keyboard layout for Windows 2000 and XP that is usable with a Unicode Inuktitut syllabic font such as NunacomU, Pigiarniq, etc. It has a similar layout as Nunacom Inuktitut keyboard (Indonesian) with some improvements.

CAPS LOCK key is used to switch between the Unicode Syllabics and Roman modes. CAPS LOCK key must be ON (IN) for Syllabics and OFF (OUT) for Roman. The right "Alt" key OR the "APOSTROPHE" key can be used to get the dotted characters as in Aujaq-titut for the Macintosh. So, to get "ᐃ̇", type "Alt" + "p" keys OR "APOSTROPHE" then "p".

Each picture below shows the tables accessible using the modifier keys. The modifier keys required to access each table are shown in light grey. The key shown in red (apostrophe) is the "Dead Key".

# *Sannatitut Keyboard Mapping*

~	~	<	ς	β	γ	ϛ	λ	α	ε	ζ	-	↵	Backspace
Tab	~	Δ	ρ	ρ	η	ι	Γ	σ	τ	π	.	\	
Caps	~	▷	ς	d	ϛ	ι	λ	ο	ϛ	;		Return	
Shift	~	◁	ς	β	β	γ	λ	,	.	ζ		Shift	
Control	Alt		Shift									Alt	Control

~	!	@	#	\$	%	^	&	*	[	]	-	+	Backspace	
Tab	Ƶ	Δ	ƶ	Ṗ	Ň	ǰ	Ġ	σ	ć	đ	"	'	/	
Caps	Ʒ	▷	Ƀ	ḍ	ᱚ	ǝ	j̣	ò	ú	...			Return	
Shift	ƴ	◁	ƭ	ḅ	Č	ı̇	L̡	à	é	ı̈			Shift	
Control	Alt		Shift										Alt	Control

~	1	2	3	4	5	6	7	8	9	0	_	=	Backspace
Tab	ᄀ	ᄁ	ᄂ	ᄃ	ᄄ	ᄅ	ᄆ	ᄇ	ᄈ	ᄉ	ᄊ	ᄋ	ᄌ
Caps	ᄎ	ᄏ	ᄐ	ᄑ	(	)	ᄔ	ᄕ	ᄖ	:	"	Return	
Shift	ᄒ	<	ᄗ	?	H	Q	C	<	>	ᄚ	Shift		
Control	Alt		Shift									Alt	Control

~	¢	®	¼	½	¾	⌘	™	©	÷	+	—	=	Backspace
Tab	ı	À	Á	Â	Ã	Ä	Å	Ç	È	É	Ê	Ë	/
Caps	Ĵ	Ÿ	Ž	Š	Ť	Ú	Ů	Ź	...				Return
Shift	İ	‹	ƒ	{	}	ˆ	˜	◊	◌	◌			Shift
Control	Alt		Shift									Alt	Control

## The Dead Key (Apostrophe)

The Apostrophe Dead Key acts as a shortcut key to access the dotted characters. Instead of using "Alt" key you can do the same thing with the Dead Key. This makes the whole process faster as you don't have to remove your hands from the keys to get the dotted characters. You just press the Apostrophe key first then the corresponding character key.

When typing in Roman the Dead Key can also be used to type the "Barred Ł". Type "Apostrophe" and "l" for the lower case "Barred ł" and "Apostrophe" and Shift "L" for the upper case "Barred Ł".

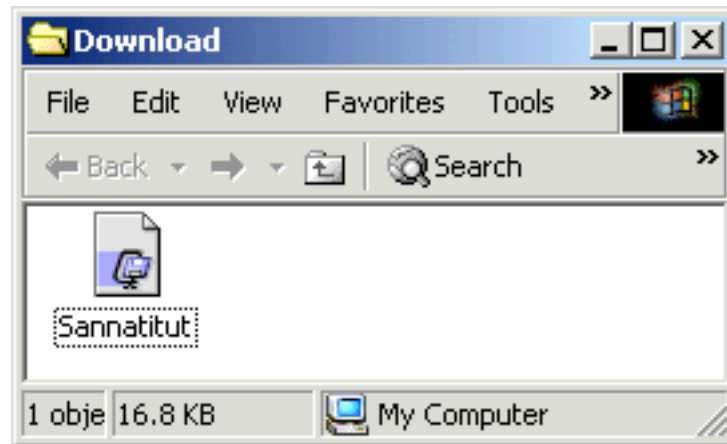
The following characters are accessible using the Apostrophe Dead Key (press Apostrophe key first). Remember the Caps Lock must be ON for syllabics!

Location	Symbol	F	ᐃ	!	¢
W	ᐃ	K	ᐅ	@	®
s	ᐅ	?	ᐅ	#	¼
x	ᐅ	E	ᐅ	\$	½
W	ᐃ	D	ᐅ	%	¾
S	ᐅ	C	ᐅ	^	⌘
X	ᐅ	e	ᐅ	&	™
t	ᐅ	d	ᐅ	*	©
g	ᐅ	c	ᐅ	(	÷
b	ᐅ	q	ᐅ	)	+
r	ᐅ	a	ᐅ	_	—
f	ᐅ	z	ᐅ	:	...
v	ᐅ	O	ᐅ	{	”
Q	ᐅ	L	ᐅ	[	“
A	ᐅ	I	ᐅ	]	‘
Z	ᐅ	T	ᐅ	}	’
u	ᐅ	Y	ᐅ	\	/
j	ᐅ	U	ᐅ	V	{
m	ᐅ	1	!	B	}
i	ᐅ	2	@	~	~
k	ᐅ	3	#	P	ᐅ
N	ᐅ	4	\$	<	ᐅ
o	ᐅ	5	%	>	ᐅ
l	ᐅ	6	^	G	ᐅ
M	ᐅ	7	&	H	ᐅ
y	ᐅ	8	*	+	=
h	ᐅ	9	[	"	=
n	ᐅ	0	]	'	-
p	ᐅ	-	-	R	ᐅ
J	ᐅ	=	+	;	∴
/	ᐅ			space	-

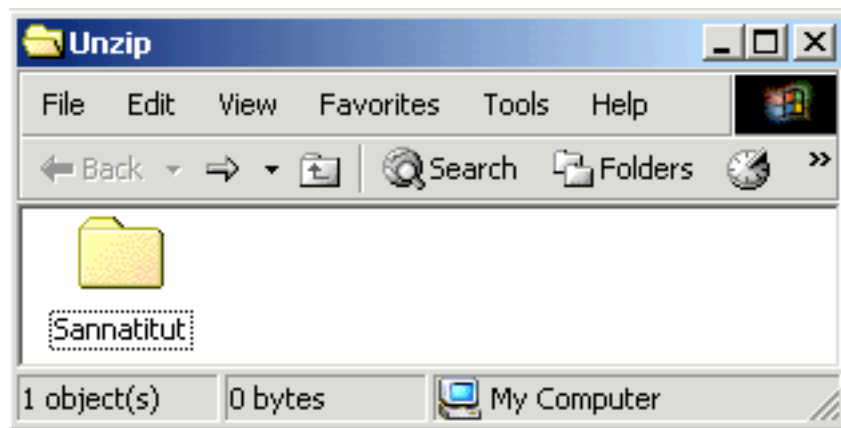
## Installation:

To install and activate Sannatitut keyboard layout follow the steps below:

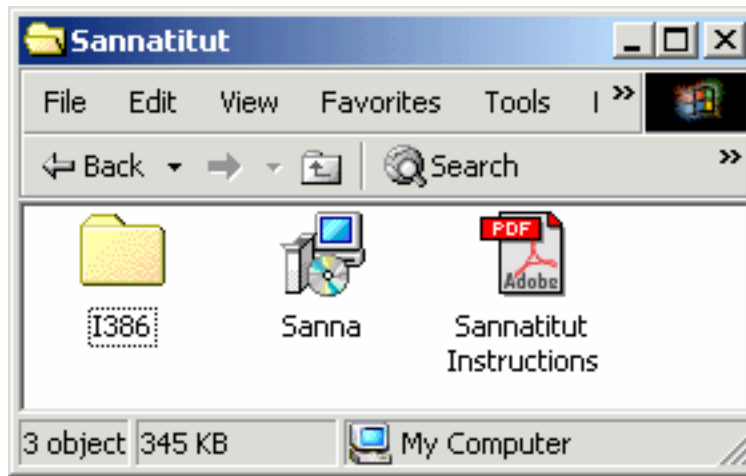
1. You should have received Sannatitut keyboard layout in a compressed archive. The appearance of the icon of the compressed archive may appear different from the one below as it would depend on the compression/extraction software installed in your system as the default compressor/extractor. Use your file extraction software to extract the contents.



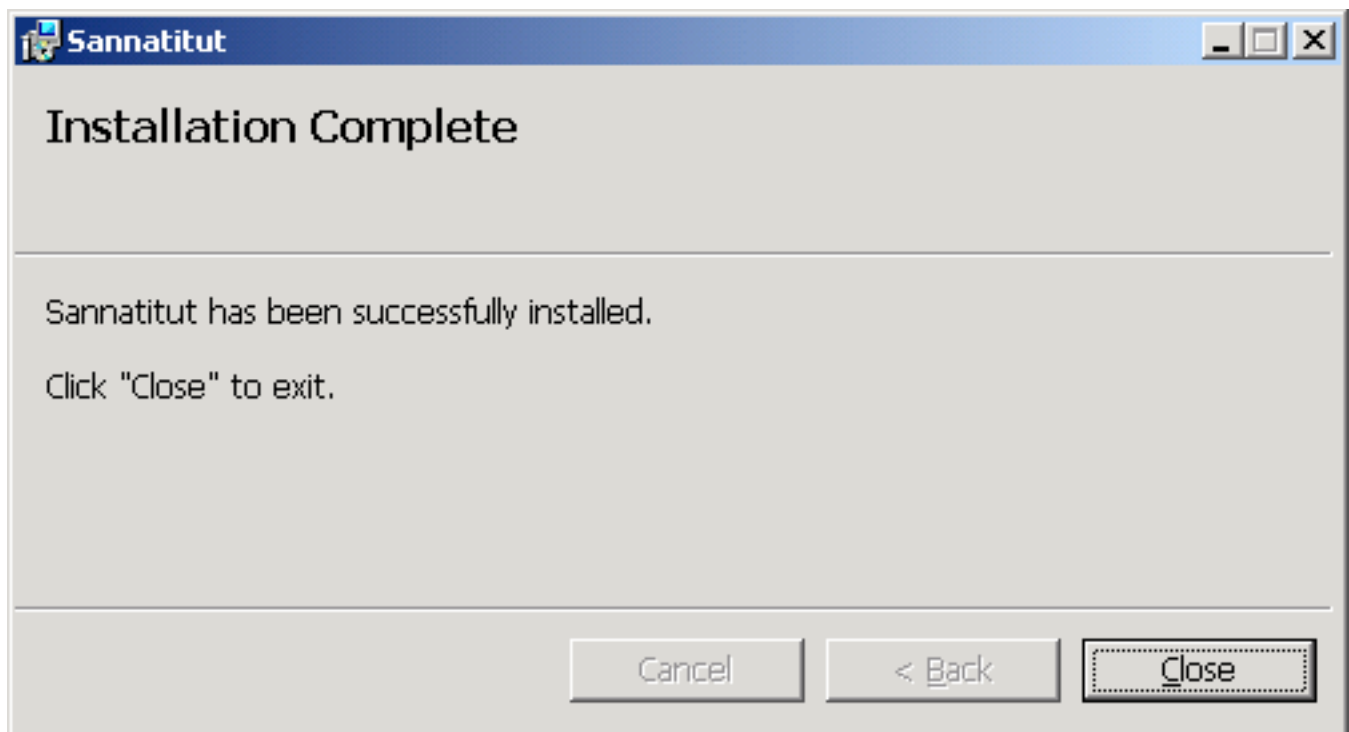
2. Once the contents are extracted you should have a folder named "Sannatitut". The "Sannatitut" folder contains the Sannatitut keyboard layout installer "Sanna".



3. Open the "Sannatitut" folder and then double click on the "Sanna" installer as shown below. There will be a momentary pause during installation.



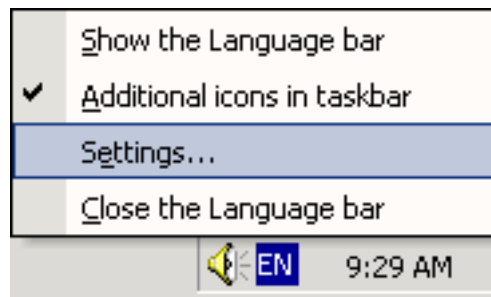
4. Once the installation is complete the following message should come up. Click on "Close" and then proceed onto the Activation procedure.



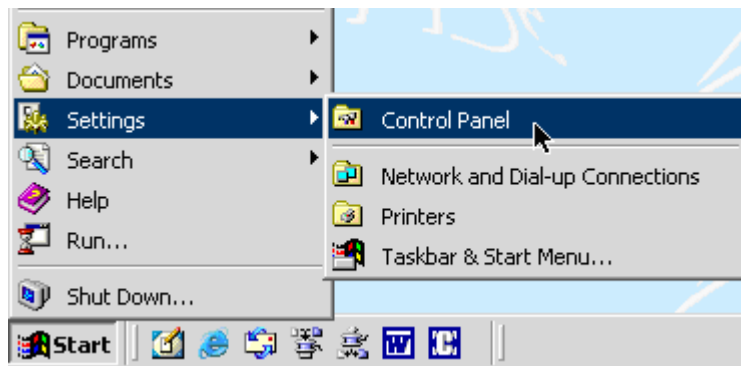
### Activation

Now, you have to activate Sannatitut keyboard layout to make it appear in the Language Bar on your Menu Bar as a user selectable keyboard.

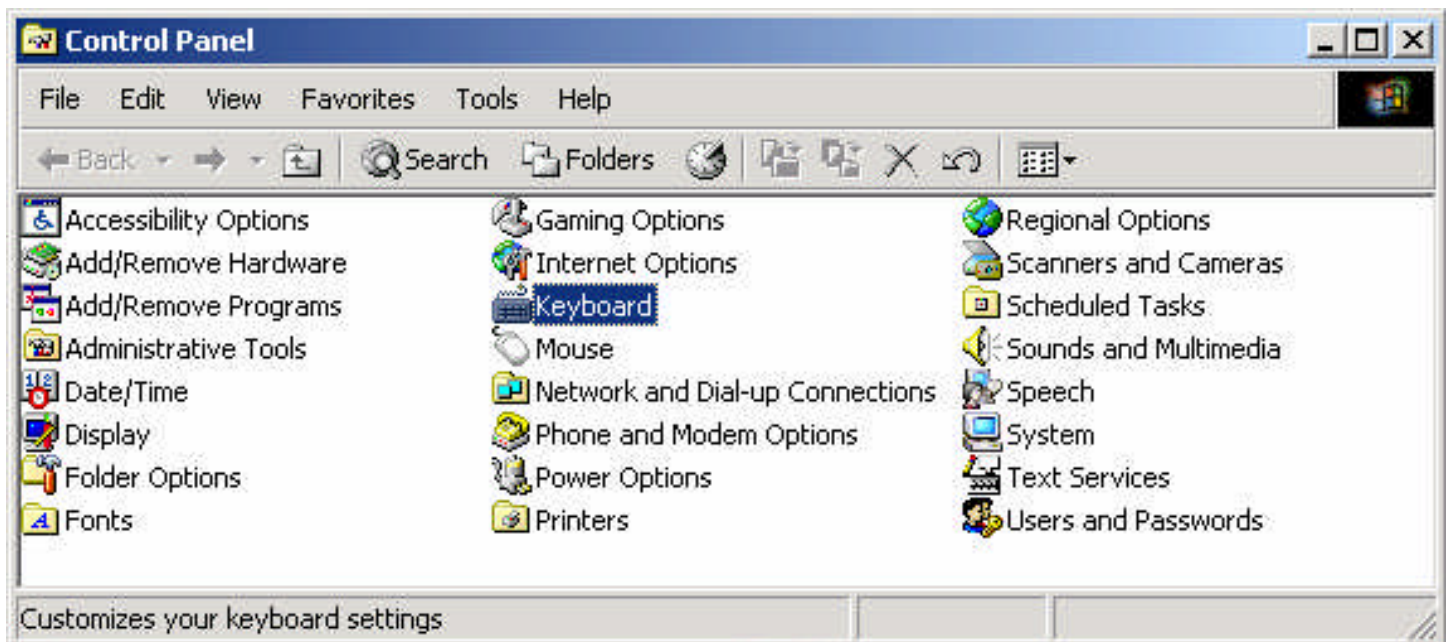
1a. To activate Sannatitut keyboard layout, you can either go to "Start" and "Control Panel" or, if your keyboards are already accessible through the Language Bar (usually appears as "EN") on the Menu Bar, just right click on "EN" and select "Settings" as shown below then skip down to step #4.



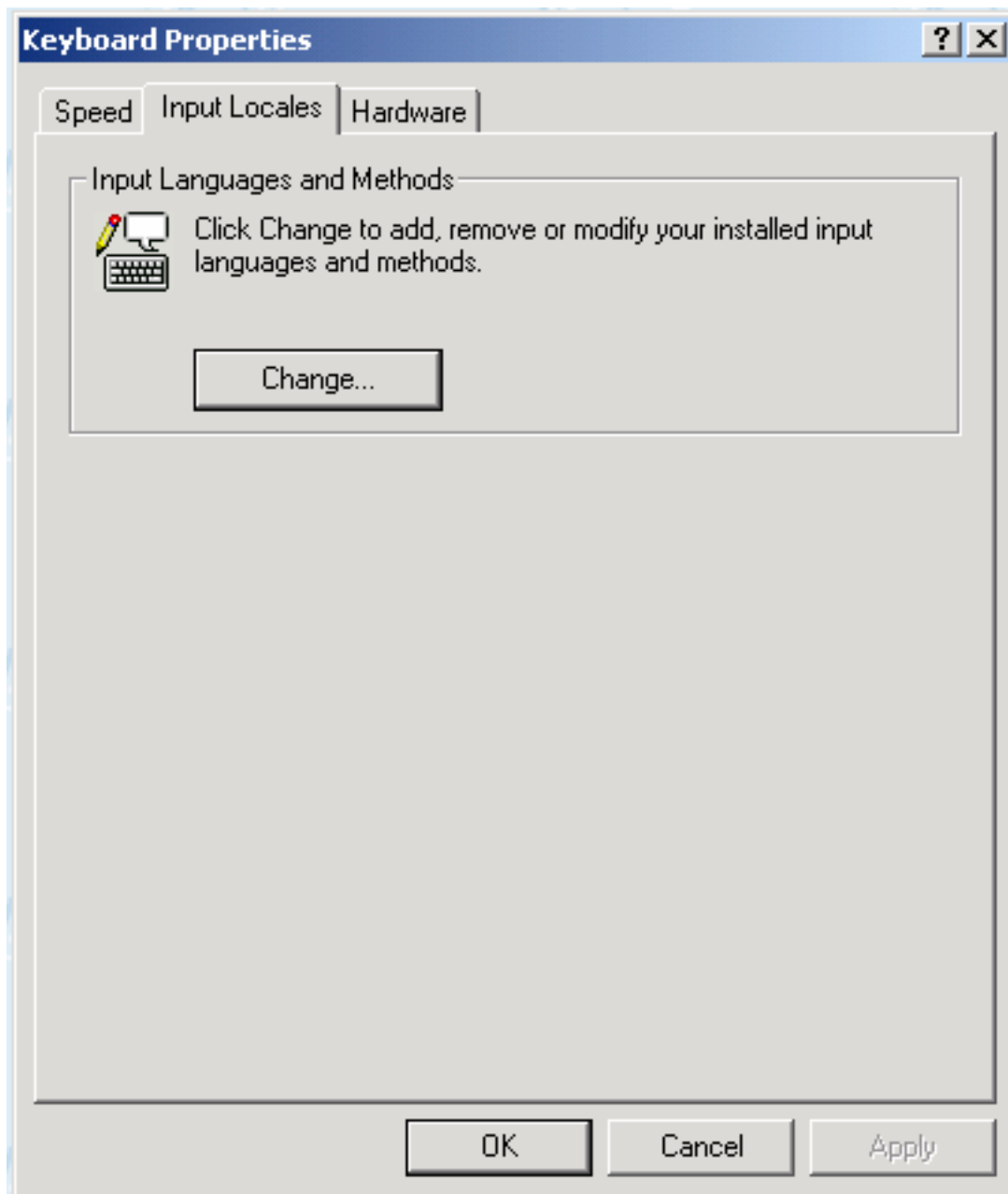
1b. If the Language Bar is not activated ("EN" not showing on the Menu Bar), then, go to "START" as shown below & select "Control Panel".



2. Once the Control Panel is opened double click on "Keyboard".

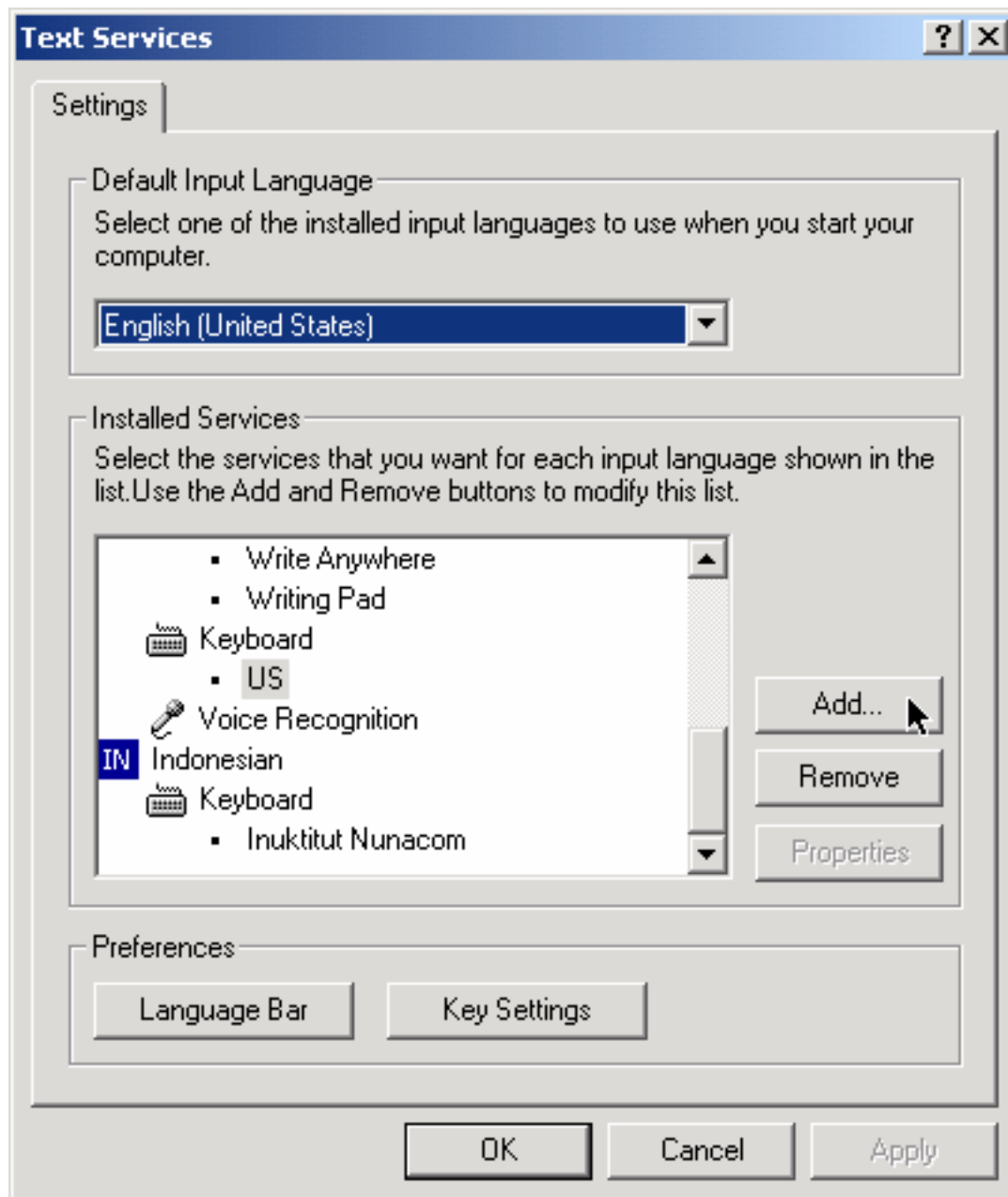


3. From the Keyboard Properties box select the "Input Locales" tab and click on "Change" as shown below.

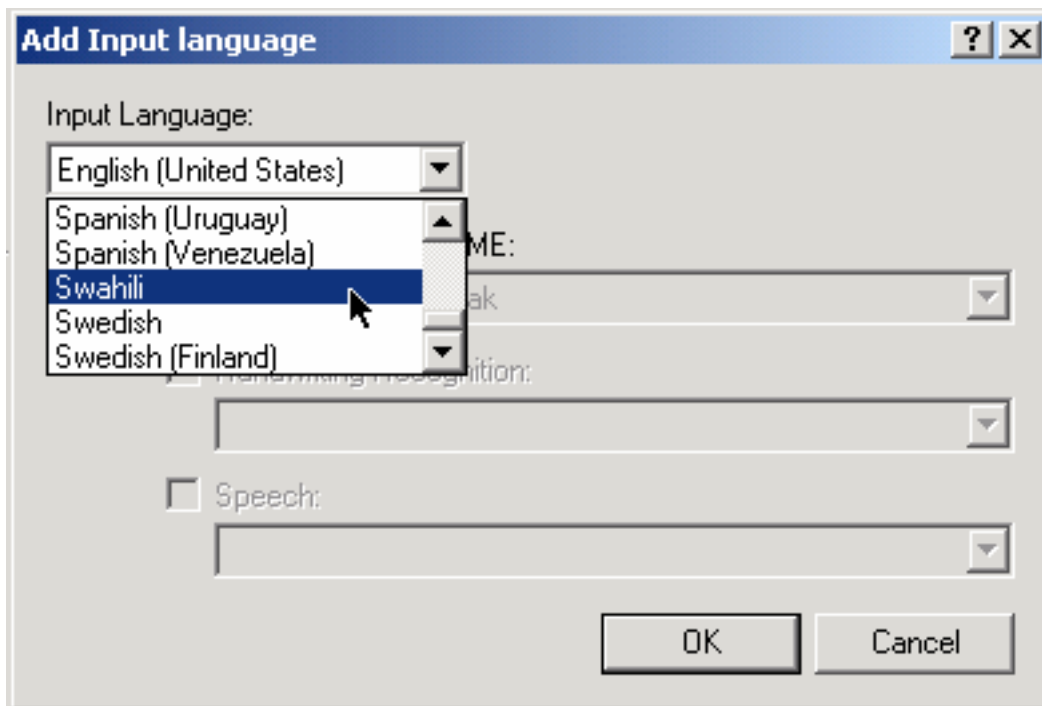


4. When the “Text Services” box comes up click on “Add”.

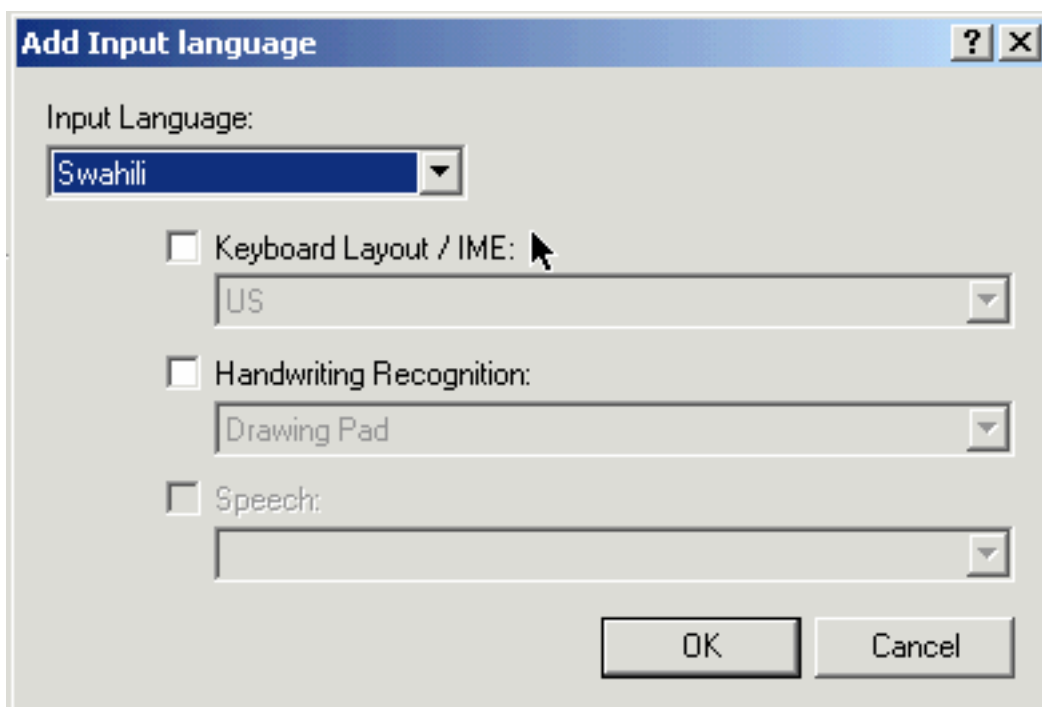




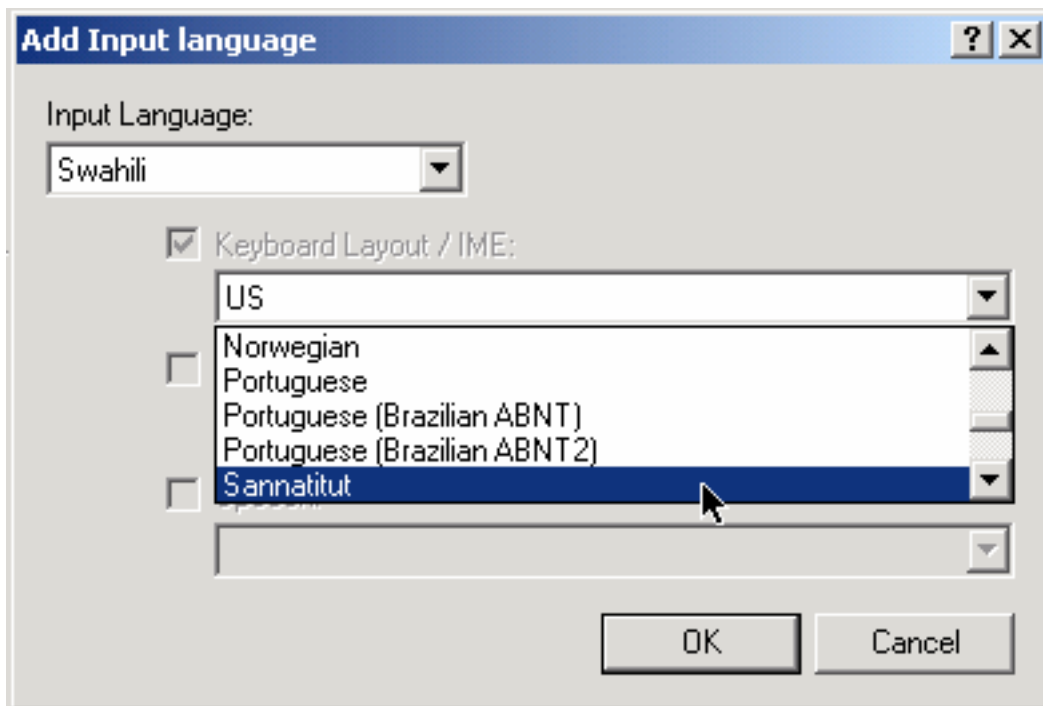
5. Next an “Add Input Language” box should come up. Click on Input Language popmenu items and scroll down and select “Swahili” from the list of languages available. (Why Swahili you ask? It starts with the same letter as Sannatitut and its a language not commonly used in the North and therefore not likely to interfere with your other Swahili language requirements any time soon!)



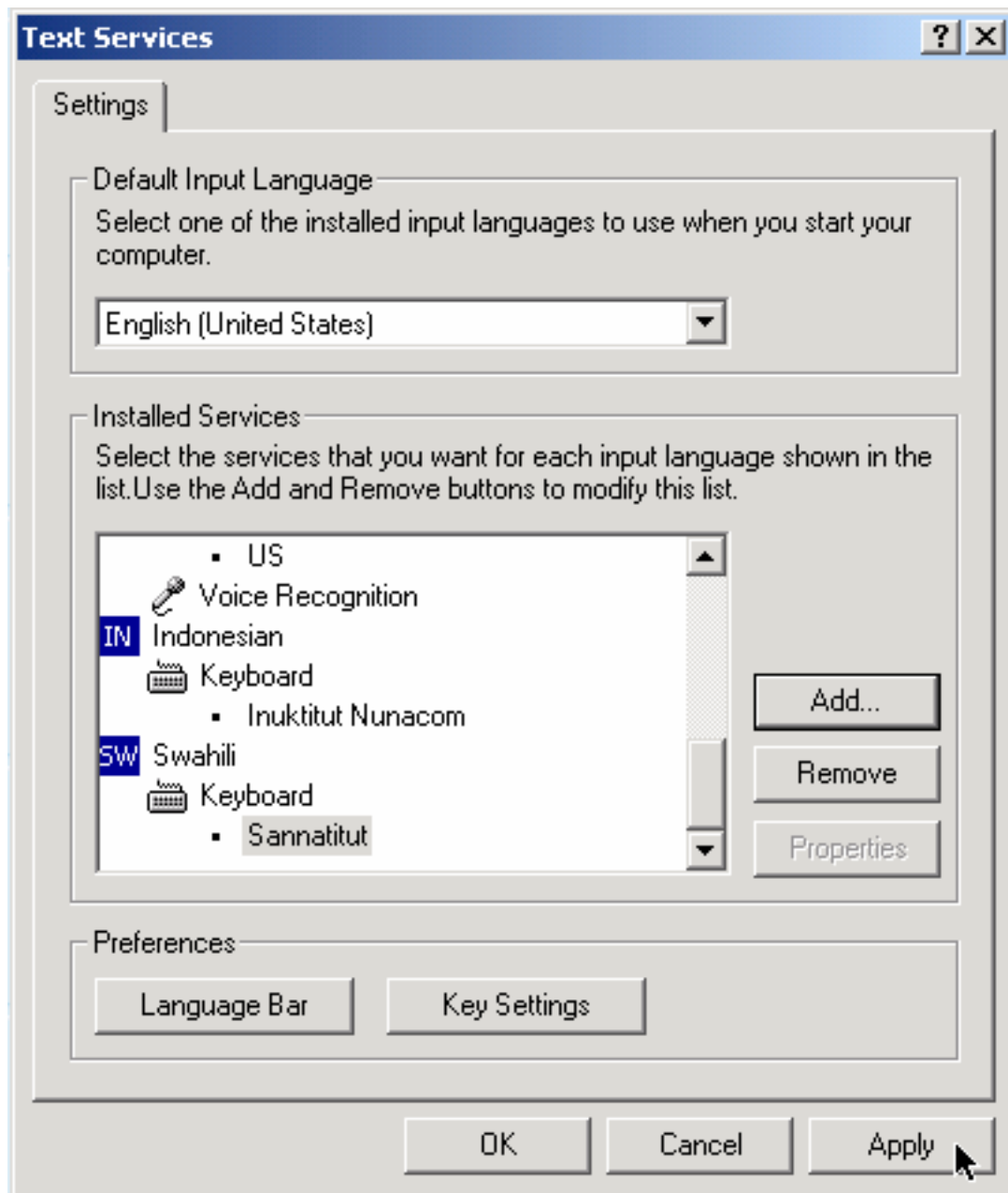
6. Then put a check mark beside the “Keyboard Layout/IME:” to make that popup menu editable.



7. Then select “Sannatitut” from the list of keyboard layouts.

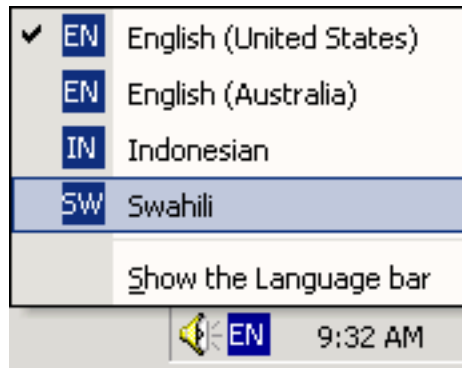


8. Click “OK” and then “Apply” as shown below.



## Usage

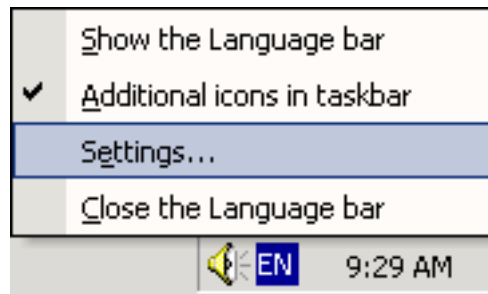
Now you should be able to change the keyboard layout to Sannatitut via the Language Bar on the Menu Bar (bottom right corner of the Menu Bar). Start your favourite application and select a Unicode syllabic font through the Fonts Menu of your application. Left click "EN" to make it popup and to select Sannatitut keyboard layout as the active Keyboard, highlight it as shown below. Remember CAPS LOCK key ON (IN) for Syllabics and CAPS LOCK key OFF (OUT) for Roman.



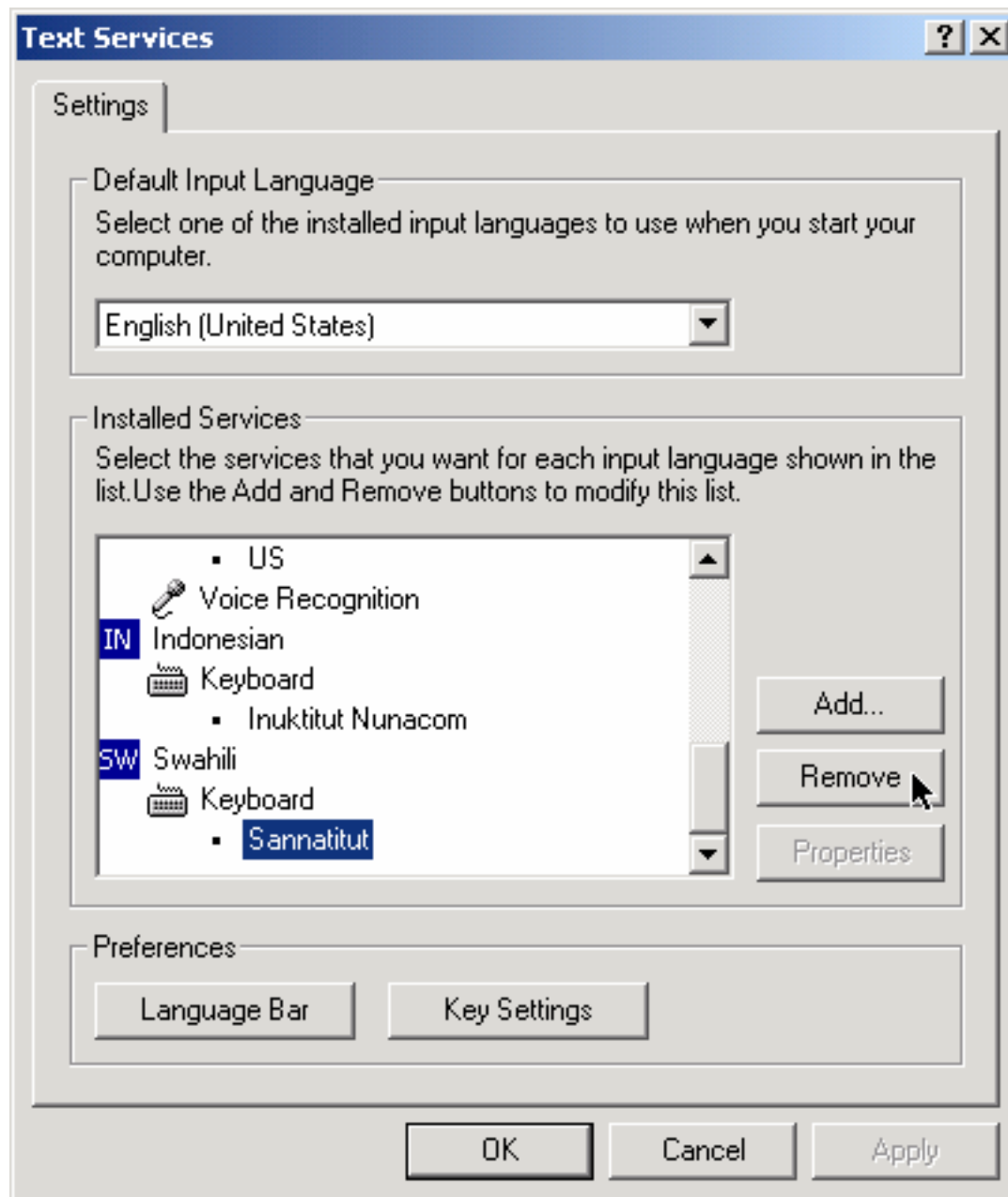
## Uninstall

If you have to uninstall Sannatitut for any reason, follow the steps below:

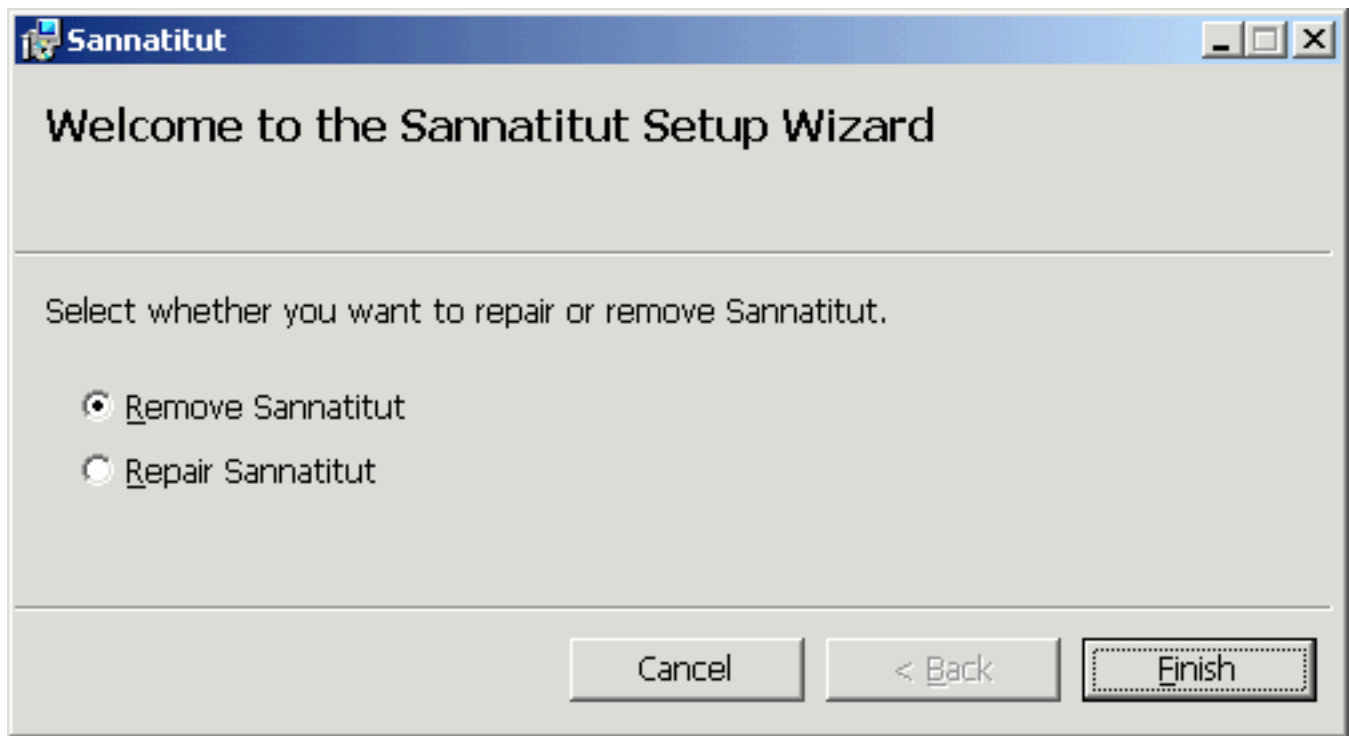
1. You can either go to “Start” and “Control Panel” as explain above in the beginning of the Installation process or right click on Language Bar, "EN", on the Menu Bar and select "Settings" as shown below:



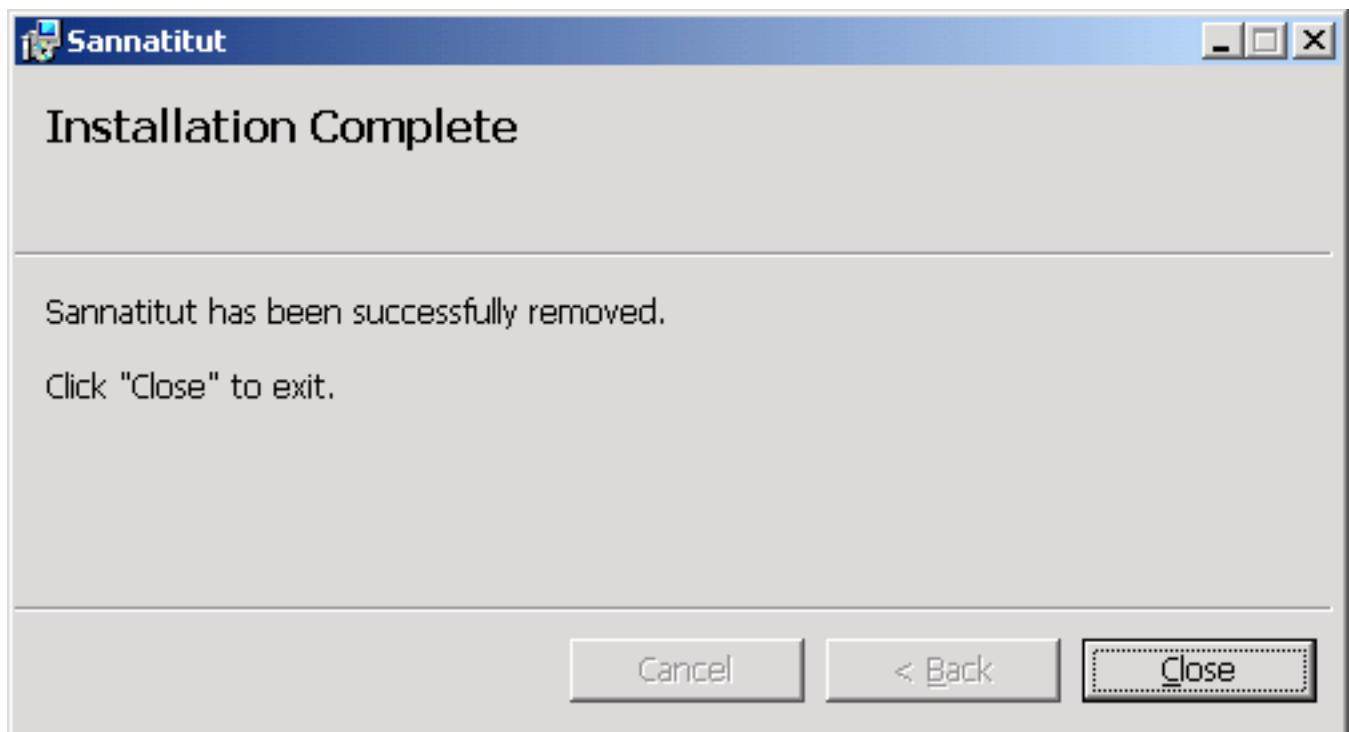
2. When you get to the "Text Services" box, click on “Remove” this time. Then click on “Apply” and “OK” and exit from “Keyboard” Control Panel.



3. Then double click on Sannatitut installer in the Sannatitut folder and when a box like the one below comes up select “Remove Sannatitut” and click on “Finish”.



4. After a momentary pause the following message will come up when the uninstall process is completed. Now your system has been “exorcised” of Sanna. Hallelujah!



If you have any comments, questions, or require further information, assistance, etc., my e-mail address is [siva57@yahoo.com](mailto:siva57@yahoo.com). Enjoy!

Norman Keenainak

Yellowknife, NT

July 2003

Website: <http://www.geocities.com/siva57>

**Notice:** The materials in this package have been developed for the purpose of promoting and enhancing Inuktitut. All materials in this package may be freely copied and distributed but may not be sold for profit.